

The Magazine of Hershey Area Playhouse

# BRAVO!

2019  
SEASON

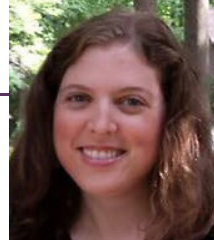
VOLUME 12 • ISSUE 5  
HOLIDAY EDITION 2019

HERSHEY AREA PLAYHOUSE PRESENTS



*Welcome Home!*

# LETTER FROM THE CHAIR



## Hello Playhouse fans!

You hold in your hands, not only the second Holiday edition of our *Bravo* magazine, but the last hard copy! Don't worry; the magazine isn't going away, but in an effort to trim some costs and be more environmentally conscious, the Playhouse is making Bravo digital, beginning with the winter edition in 2020.

Speaking of digital, check out our NEW website: [www.hersheyareaplayhouse.org](http://www.hersheyareaplayhouse.org). It's been many long years in the making and I am so grateful to impresario Jasmine Bucher for finally getting us to this goal.

The features of this new site are just part of the many exciting things that are happening at the Playhouse.

I should say that I am sad to see our 20th anniversary season come to a close with this holiday show, but I would be fibbing. I am so looking forward to 2020, our 21st season for many reasons! 2019 has been a year like no other at the Playhouse. There were a lot of great things, including our first JR. production – Dear Edwina Jr. – which if you missed the show, you missed out! You can get a peek at our cast as they have taken over the Kids Corner of this edition. We did experience a few more hiccups than usual, but I'll chalk it up to growing pains.

The Playhouse continues its *Fulfilling the Promise* campaign, more info on that is inside if you wish to contribute toward us paying off the last of our construction loan!

If you are in the spirit of giving, but not cash, we could also use some facility supplies, contributions that are still tax deductible:

- A 12-foot ladder
- 6-12 Folding chairs with rubber feet
- A lockable, legal size filing cabinet
- A large, mountable wooden pegboard

At the end of December, two intrepid board members, Mike Ritter and Cory Wilkerson will be leaving our board of directors. Their voices have been crucial in discussions about the artistic, financial, and communal impact of this Playhouse. Thank you, Mike. Thank you, Cory. For your service... though I suspect, you won't be strangers to the building!

Lastly, I would like to share that we are dedicating the run of *THE HOMECOMING* to the Leader Family, the staff and residents of Country Meadows.

Ten years ago, the Leader family offered the Playhouse organization this barn, which has been transformed into a theater, but has evolved into a second home for many community members. Every Wednesday before one of our shows open, we have held a 'Preview Night' for the residents of Country Meadows to come and see a performance. It's just a small way we can express our gratitude for their continued support. We thank them for being such good neighbors with us for ten years. We would not have a home without them.

I wish very happy holidays to you and to whoever and wherever you call home!

*Jennifer Feldser*

Jennifer Feldser, Chairwoman

Thanks to Filson water  
for co-sponsoring our  
Concession stand!

- 5 gal. Water Cooler Rental for Residential and Commercial Use
- Coffee Service for Commercial Customers
- Private Label Bottles Water
- Water Treatment Service

Bringing You the World's BEST Water!



By O.P. Jeff Kintz: (717) 979-0841  
Brand [Your Own Bottle.com](http://YourOwnBottle.com)  
11 Roadway Dr, Carlisle



# CONTENTS

PAGE 1  
BOARD MEMBERS

PAGE 2  
UPCOMING  
PRODUCTION

PAGE 4  
ARTISTIC REPORT

PAGE 6  
VOLUNTEERS

PAGE 7  
FINANCIAL REPORT

PAGE 8  
EDUCATION

PAGE 10  
COMMITTEE  
SPOTLIGHTS

PAGE 12  
SPONSORSHIP  
OPPORTUNITIES

PAGE 13  
KIDS' CORNER



# CURRENT BOARD MEMBERS

Skip Becker, Founder



**Jilly Harris**  
*Marketing Chair*



**Michael Ritter**



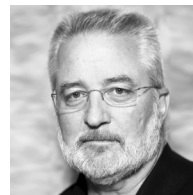
**Cory Wilkerson**



**Maxine Oliver**  
*Co-Volunteer Committee Chair*



**Jasmine Ammons Bucher**



**Tom Marks**  
*Treasurer*

## CONTRIBUTING MEMBERS

**SCENE STEALER: \$2500–\$4999:**  
Scott & Cory Wilkerson

**SPOTLIGHT: \$1000–\$2499:**  
Alex Roca  
Anonymous

**LEADING ROLE: \$500-\$999:**  
Dr. John & Tasha Messmer  
Anthony & Leah Pingitore

**FEATURED ROLE: \$250–\$499:**  
Susan Bianchi

**ENSEMBLE: \$100–\$249:**  
Linda Pagliarulo

**CREW MEMBER: \$50–\$99:**  
Jill Panyard

**DESIGNER: \$1–\$49:**  
Brian & Sheila Hartmann  
Joann Wallace

## PAST BOARD MEMBERS

Jim Bush	John Messmer
Jeff Cartwright	Jeff Miller
Susan Cerminara	Debbie Nifong
Randy Cline	George Nye
Susan Cort	Jill Panyard
Mark Douglas Cuddy	Anthony Pingitore
Tom Curry	Bernie Resnick
Derek Dunham	Nan Resnick
Matthew Ford	Theresa Ridge
Dustin Foreman	Michele Robertson
Lisa Greene	Alex Roca
Jack Hartman	Jennifer Schlener
Christine Hepler	Patrick Seeley
Ellen Kellner	Ken Skelly
Michael Lazorcik	Sunday Gallagher Strange
Jennifer Lear	Leona Tinkey
Eric Mansilla	Paul Thompson
Joan May	Ed Wallace



# The Homecoming

**DIRECTED BY MARCIE WARNER**

Hershey Area Playhouse will close its 2019 with the heartwarming memory play, *THE HOMECOMING*. While some may remember the TV Christmas special starring Richard Thomas, Patricia Neal and Edgar Bergen, there are many more who know the long-running family television series it became, *The Waltons*, which ran on CBS from 1972 to 1981.

From Earl Hamner Jr.'s novel, to the teleplay, to the stage (adapted by Christopher Sergel), the story takes place one Christmas Eve in 1933. The Spencer family (the name was changed for the series) awaits the return of their father who has found scarce available work many miles from home. With anxious anticipation, the eight children and their mother prepare for Christmas with the uncertainty of their father and husband's return in the midst of a winter snow storm. The eldest son is sent out to find his father, encountering many of the town's characters, as well as some revelations about them, himself, and the man for whom he is searching. It is a perfect "get you in the mood for the holidays" experience that will be sure to please Playhouse audiences.

Hershey Area Playhouse produced this play in December of 2007, during its first season in its permanent home. I had the privilege of directing that first production, and when directors were offered the opportunity to propose what



plays they would like to direct in this 2019 "Director's Choice" season, I submitted *THE HOMECOMING*.

The cast features Devin Hinkle as Clay Boy Spencer, Tara Mead as his mother, Olivia, David Lang as his father, Clay, and Riley Beers, Adele Hosenfeld, Ryan Hosenfeld, Elizabeth McKissick, Samuel Pimental, Rachel Pronesti, and Romeo Wills as the Spencer children. Other members of the cast include Jacob Felix as Birdshot, Neal Ambron and Dorothy

## UPCOMING PRODUCTION



Cheyleigh Hykes, Jack Martin, JoEllen Myers, Deborah J. Santiago, Bridget Still, and Luann Stubbs.

The production is produced by Pam Whitenack (who also produced the 2007 production), with stage management by Gale Sherrid, and staffed by the following talented volunteers: Becky Jenkins, Assistant Stage Manager; Carlton Hoke, Set Designer; Linda Pagliarulo, Costume Designer; Austin Shay, Light Designer; Barrett Rhoads, Light Director; Dave Rowland, Sound Designer; Rich Hegel, Props Master; Nancy Parson, Set Dresser; Kate Foley, Public Relations; Jeff Miller, Set Construction; Mike Feldser, Photographer; Drenda Mary, Costume Assistant; Mike Toth, Lighting Tech; Stage Crew members Rich Hebel, Brittany Laird, Todd Pagliarulo, Patt Roth, Amy Skeel and Stephanie Toth; Joe Doyle, Hair Consultant, and Maxine Oliver, Board Liaison.

Smith as Grandpa and Grandma, Kerry R. Mowery as Charlie Sneed, Lois Heagy and Colleen Mullikin as the Etta and Emma Staples, Deb Stegall as City Lady, Ken Skelly as Reverend Dooly, Mike Stubbs as the Sheriff, John Switaj as Ike Godsey, and Nina Francis and Eli Luongo as Mary and Joseph. Rounding out the cast are Ensemble members

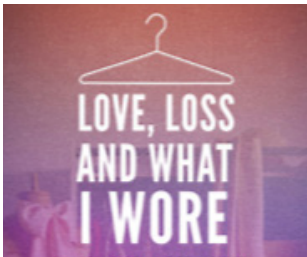
A theatrical production is never a singular effort. It is the hard work and creativity of these many people, with the support of the Board of Directors. My sincere thanks go out to the Artistic Committee for giving me the opportunity to work with these enthusiastic and talented individuals. Please come to see the fruits of their labor on display, December 5-8 and 12-15.



# ARTISTIC REPORT

## Hershey Area Playhouse's 2020 Season

We are pleased to announce our 21st season!



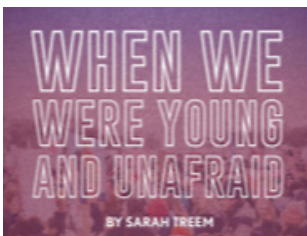
### LOVE, LOSS, AND WHAT I WORE

February 13–16, 20–23, 2020 • Directed by Jennifer Feldser

We kick off 2020 with the Central Pa premier of LOVE, LOSS, AND WHAT I WORE by Nora and Deliah Ephron. From the beloved writers of *Sleepless in Seattle*, *When Harry Met Sally*, *Julie and Julia*, and *My Blue Heaven*, comes "a play of monologues and ensemble pieces about women, clothes, and memory covering all the important subjects- mothers, prom dresses, buying bras, hating purses, and why we only wear black. Based on the best-selling book by Ilene Beckerman." It is a great alternative to the usual February romantic fare, for ladies' night, or mothers and daughters to share.

Auditions will be held at Hershey Area Playhouse on December 9 and 10, 2019, from 6–8 pm. *The script is available on the online through the Playhouse's dropbox. Women interested in auditioning can come prepared with a monologue of their choosing or one from the show.*

In lieu of an April show, we are bringing in a special event. Returning by demand, the popular, local group **The Unforgettable Big Band** comes to the Playhouse for two unforgettable nights on May 8 and 9. The tribute to Bob Hope, featuring music by Les Brown and Doris Day, promises to be an amazing evening of big band music.



Then in May comes,

### WHEN WE WERE YOUNG AND UNAFRAID

Running May 14–17, 2020 • Directed by Mike Ritter

In the early 1970's, prior to Roe v Wade and the Violence Against Women Act, Agnes has turned her quiet bed and breakfast into one of the few spots where victims of domestic violence can seek refuge. But to her dismay, her latest runaway, Mary Anne, is beginning to influence Agnes' daughter Penny. As the feminist revolution draws closer, Agnes is forced to confront her own presumptions about her world and the women she has spent her life trying to help.



### ROCK OF AGES

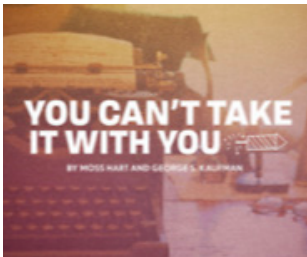
July 16–19 & 23–26, 2020 • Directed by Jasmine Ammons Bucher

It's the tail end of the big, bad 1980s in Hollywood, and the party has been raging hard. Aqua Net, Lycra, lace, and liquor flow freely at one of the Sunset Strips last legendary venues, a place where rocker Stacey Jaxx takes the stage and groupies line up to turn their fantasies into reality. Amidst the madness, aspiring rock star (and resident toilet cleaner) Drew longs to take the stage as the next big thing (and longs for small-town girl Sherri, fresh off the bus from Kansas with stars in her eyes). But the rock and roll fairy-tale is about to end when German developers sweep into town with plans to turn the fabled Strip into just another capitalist strip mall. Can Drew, Sherri, and the gang save the strip—and themselves—before it's too late?

# ARTISTIC REPORT

## Hershey Area Playhouse's 2020 Season

We are pleased to announce our 21st season!



### YOU CAN'T TAKE IT WITH YOU

October 1-4, 8-11, 2020 • Directed by Larry Sheaf

This comedy has no shortage of delightful characters. Set in the 1930s during the Great Depression, the action of the play is in the family home of Martin Vanderhof. It is rather an every-man-for-himself home presided over by Grandpa Vanderhof. Everyone goes on with the business of living in the fullest sense of the word. This is a house where you do as you like, with no questions asked. Against this backdrop is Grandpa's granddaughter, Alice, and her romance with her down-to-earth boss, Tony. Anything can happen when Alice invites Tony and his straight-laced parents to dinner one night. Winner of the Pulitzer Prize in 1937 and the Oscar for Best Picture of 1938, this Kauffman and Hart classic is sure to delight our audiences.



The 21st season concludes with our holiday show, Debbie Macrombe's

### A GIFT TO REMEMBER

Running December 3-6, 10-13, 2020 • Directed by Lois Heagy

On Christmas Eve, during a snowstorm, a group of strangers are on a train to Boston from Bangor, Maine, where the airport had been shut down due to the weather. Once they reach Boston, many of the passengers hope to make connections to various destinations across the United States. A sailor is trying to get to Texas to place an engagement ring on his girlfriend's finger. A software salesman, returning from a business trip, wants to return to Los Angeles and patch things up with his wife. A recently widowed woman wishes to spend the holidays with her daughter's family. A man and his wife are attempting to reach Maryland in time for the birth of their first grandchild. And other travelers have similar desires to reach their destinations in time for Christmas. However, the train develops engine trouble, and there are track problems ahead. The passengers are suddenly forced to disembark and take shelter in a small depot in New Hampshire. Understandably disappointed and dispirited, they try to make the best of things with little success at first. Eventually, however, they begin to bond, despite their circumstances and celebrate the true spirit of Christmas.

**Come visit the Playhouse where entertainment and talent abound in our community!**

Here is another unique way in which you can donate to the Playhouse.



<https://smile.amazon.com/>. Using this website, a percentage of what you spend will be sent to an organization of your choice. Ooh! Ooh! Pick us! Pick us!



There are so many ways to be involved in the theater other than being a part of a show. Here are the committees we have at the Playhouse. If something peaks your interest, log onto our website and email them to get involved!

## **VOLUNTEER COMMITTEE**

Usher shows, sell tickets in the box office, help at auditions, attend local community events and promote the Playhouse

## **ARTISTIC COMMITTEE**

Researches and proposes the plays and musicals that will be part of our main stage season

## **DARK NIGHT COMMITTEE**

Seeks out shows for single night or limited runs, not limited to plays or musicals, also could include music groups, comedy acts, etc.

## **MARKETING COMMITTEE**

Helps promote all the events through a variety of print, digital, and social media platforms

## **FUNDRAISING COMMITTEE**

Keep the lights on and the toilet paper rolling by aiding with finding other ways of financing the theater besides ticket revenue

## **OPERATIONS COMMITTEE**

Responsible for general operation, maintenance, and repair of the Playhouse facility and the storage barn. Responsible for use of the facility and rental of the Playhouse, maintaining the Playhouse calendar. Oversees set construction guidelines. Responsible for ticketing functions.

## **EDUCATION COMMITTEE**

Teach in our year-round, award-winning Theater Academy

## **PRODUCTION TEAMS**

Are you interested in designing lights, building a set, costuming, stage managing, directing, etc.?

*Hello*  
**PLAYHOUSE**  
*Volunteers!*

Check out our website for links to our updated volunteer policies, clearance policy, and our code of conduct.

Sign up to usher a show or work the box office and see the show for free!



# FINANCIAL REPORT

## FULFILLING THE PROMISE

In 1999, Hershey Area Playhouse was formed with partnership to build a permanent home for our community theater. After a successful campaign, we moved into our renovated facility in 2007. For the past 10 years, we have been striving to pay down the remainder of the original \$1.5 million capital campaign. The time has come for a final push to pay the last \$300,000 off and we need your help. 2019 is our 20th anniversary year- ten years as nomads and ten years in our beloved barn. In honor of this celebration, we are asking individuals like you to help us reach our goal!

By supporting the Playhouse through this Burn the Mortgage Campaign, you will be preserving an organization that has a direct, positive impact on the people of the Hershey and surrounding areas. You will be helping us maintain year-round quality entertainment as well as our Theater Academy that educates the next generation of performers. And all donations are tax-deductible!

### DID YOU KNOW?

The Playhouse impacts the lives of thousands of people every year. Here are a few small examples of how your gift will make a difference in the Playhouse.

**\$1,200 – Cost of one session by one teacher for the Theater Academy**

**\$5,400 – Average cost to produce one play**

**\$7,600.00 – Average cost to pay the orchestra for one musical**

**\$48,000.00 – Total cost to fund a season of five shows**

For more information, contact Jennifer Feldser at 717-571-4891  
or [chair@hersheyareaplayhouse.org](mailto:chair@hersheyareaplayhouse.org).



I would like to make a one-time donation

Scene Stealer: \$10,000    Spotlight: \$5,000    Leading Role: \$2,500    Featured Role: \$1,000

Ensemble: \$500    Crew Member: \$250    Designer: \$100    Other: \_\_\_\_\_

I wish to pay \$ \_\_\_\_\_ per month for \_\_\_\_\_ months.

– \$10,000....\$833.33/month

– \$2,500....\$312/month

– \$1,000....\$125/month

– \$500.... \$62.50/month

– \$250....\$31.25/month

– \$100....\$12.50/month

I would like to help my donation to be in memory/honor of \_\_\_\_\_

I wish to be listed as an anonymous donor

Online at [www.hersheyareaplayhouse.com](http://www.hersheyareaplayhouse.com)    Enclosed is my cash    Enclosed is my check

Please charge my \_\_\_\_\_ Name on credit card: \_\_\_\_\_

Card No. \_\_\_\_\_ Exp. Date \_\_\_\_/\_\_\_\_/\_\_\_\_

Signature: \_\_\_\_\_

Name: \_\_\_\_\_

Full Address: \_\_\_\_\_

Email: \_\_\_\_\_ Phone: \_\_\_\_\_

# EDUCATION

## JILL PANYARD, EDUCATION CHAIR

The Theatre Academy continues to thrive with enthusiastic and talented students, 1st through 12th grades, along with experienced teachers. It's a place of learning, imagination and fun!

The Winter Session, January 11–February 29, 2020, will include fascinating African tales, Melodrama and character building with Big, Bold Choices.

In Spring we will offer our second annual Musical Theatre Camp for four weeks, March 14–April 4. Students in 4th–12th grades will explore acting, dancing and singing, welcoming those who are new or experienced performers. The session will culminate in a Cabaret to share with friends and family.

An exciting summer of performance is planned by our team of Theatre Academy teachers. The June Summer Camp will take place June 15–26. Each age group, 1st–3rd, 4th–6th and 7th–12th, will perform specific small plays including auditions, rehearsals, costumes, props and stage lights!

Our most popular camp, The Hershey Gardens Camp, will be held at the Playhouse and in the Gardens July 13–24. Only 30 spots are available, and it fills up fast! The opportunity for 4th–8th graders to perform this year's Peter Pan in the Gardens is an experience like no other.

All Theatre Academy opportunities can be viewed at [www.hersheyareaplayhouse.com](http://www.hersheyareaplayhouse.com) under the Theatre Academy tab. Registration for all classes is now online. Any questions can be directed to Jill Panyard, [jillpanyard@gmail.com](mailto:jillpanyard@gmail.com)



# EDUCATION



THANK YOU TO THE HERSHEY COMPANY  
FOR SPONSORING OUR THEATER ACADEMY

## Theatre Academy

*Developing Excellence – Growing Creativity*

Proud sponsor of the Theatre Academy:



# Committee SPOTLIGHT

## Rebecca Wolf



I live in York with my husband Jason. We just celebrated our 10-year wedding anniversary. We adopted our 6-year-old Malakai at birth. We also are foster parents and are blessed to have two teenage boys at the moment. My parents also live with us downstairs in in-law quarters. It's nice to have the grandparents around often!! (I am not sure who enjoys it more... me or the kids!!) I work at many community theaters as a teacher, director, music director, and actor, as well as backstage, and have been an actor for a professional theater in the past. I currently teach piano, voice, and acting privately at my home. Our family also runs an outdoor movie theater service and travels all over PA with movie screens from 16'-40'! It's a wonderful way to work with our kids and have some special family time while also teaching commitment, dependability, and professionalism.

.Last year my brother was stage managing for Laurie Peterson at another theater and they needed an emergency music director/piano player for their one tech rehearsal, so I answered the call at 7am and played for them that day. Laurie and I hit it off and became good friends and she put my name out there to the playhouse about teaching the spring session. I came on board for that session to help teach vocals for a musical theater class and I really enjoyed the staff and the kids. I was hoping to be back at sometime to work with everyone again. I was asked to come back to be vocal director for Dear Edwina. I gladly accepted. Then when some staffing issues arose, I was able to step in as director and music director for the show and I have had a blast.

I would love to come back as a music director or director again, however, this show has proven that the ride can be very rough when it is raining, or there are accidents and lots of traffic!!! So I think I will stick to teaching classes and hopefully come back for the next Jr. show!!!

The community of the playhouse is amazing. I have been I theaters that weren't so welcoming. There is a place for everyone here at the Playhouse and everyone is so welcoming and accommodating. I have also found that everyone cares about you as an individual, you aren't just a number! That means so much when you are involved in a community theater.

Oh, I am sure I could surprise a lot of people with a lot of things!! I have owned two potbelly pigs. They were wonderful pets (until the one started eating our baseboards)!! I love to bake, read, and write. I have often thought about writing kids' books that deal with adoption and foster care since we have dealt with it first hand. I love my family and friends fiercely. I have played characters like sour kangaroo from Seussical, Mrs Potts from Beauty and the Beast, and Jan from Grease just to name a few. I also played the mother in the opera Amahl and the Night Visitors. Jason and I met at our local community theater. He was lighting designer and I was music director for The Full Monty. We had to work very close because of the final scene where the audience is blinded by light. And from that time, September 17, 2007, as they say, the rest was history!

# Committee SPOTLIGHT

## Marcie Warner



Marcie Warner returns to the Director's chair after performing here in 2018's *THE CURIOUS SAVAGE*. Prior to that, she directed our productions of *IT'S A WONDERFUL LIFE*, *A FLEA IN HER EAR*, *HARVEY* and *THE ODD COUPLE*, Female Version, in addition to the first Christmas play produced on our current stage, 2007's production of *THE HOMECOMING*. Marcie has performed, directed and worked behind the scenes in many local venues for more than 30 years. Her mother sent her to the Pittsburgh Playhouse School for the Theatre at age 9, and the bug bit hard! Marcie has found her training in theatre arts to be a source of inspiration in many facets of life, onstage and off, and she highly recommends it!

Marcie is a retired educator in the Catholic Diocese of Harrisburg, most recently serving as Director of Religious Education for St. Joan of Arc Parish.

Marcie was one of the original members of Hershey Area Playhouse, having braved the icy weather for its first organizational meeting. Knowing that she would be directing *THE ODD COUPLE* in 2003, she first volunteered to stage manage *ON GOLDEN POND* the

previous year, to learn the ropes and the lay of the land at Country Meadows, one of our early venues. She has enjoyed getting to know many talented and dedicated individuals over the years. Marcie has also volunteered as an usher over the past 20 years, something that she often does with her husband of 42 years, Larry Warner. They have a daughter, Mary and four Grandcats, Terry, Kit Kat, Tooky Bear and Laney.

# SPONSORSHIP POLICIES

Hershey Area Playhouse considers all members of the Hershey Area community, who have signed up for our mailing list to be friends of its existence and mission. Friends also receive e-bulletins, including this *BRAVO* magazine, and are eligible to serve on Playhouse Committees and/or the Board of Directors. You also get discounts on our Theater Academy, Playhouse rental fees, and advertising.

**Bonus:** All contributions are tax deductible.

**GOLD: \$10,000 AND UP**

**SILVER: \$5000–\$9999**

**BRONZE: \$2500–\$4999**

**KEYSTONE: \$1000–\$2499**

**PATRON: \$500–\$999**

**CONTRIBUTOR: \$250–\$499**

**SUSTAINER: \$100–\$249**

**SUPPORTER: \$50–\$99**

**FRIEND: \$1–\$49**

**SEASON SPONSOR: \$4,000.00**

Corporate logo (if appropriate for corporate sponsorships) and recognition to appear on the annual program cover and in all appropriate materials such as ads and posters related to the annual season. Appropriate recognition to be displayed in the theater or lobby recognizing the season sponsor as well as recognition in the program, the Playhouse's official newsletter—*BRAVO*, and our website throughout the season.

**MUSICAL PRODUCTION: \$3,000.00**

**(For one show for the entire run)**

Sponsor recognition on all posters, ads, and materials related to the specific show. Sponsor also recognized inside the theater or lobby as the show sponsor.

**PLAY/NON-MUSICAL PRODUCTION: \$2,000.00**

**(For one show for the entire run)**

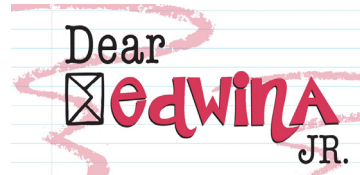
Sponsor recognition on all posters, ads, and materials related to the specific show. Sponsor also recognized inside the theater or lobby as the show sponsor as well as in the program, the Playhouse's official newsletter—*BRAVO*, and our website throughout the run.

No individual or corporate sponsor will be considered as a sponsor for any individual show for which that individual or corporate official (defined as the person or persons responsible for making sponsorship decisions) has sought or been awarded a role in the show for which a sponsorship is sought.

**ADOPT A CHARACTER: \$200**

Sponsors will be recognized in the program and curtain speeches of the show as well as in the Playhouse's official newsletter—*BRAVO*.

# Kids' CORNER



## The cast of Dear Edwina Jr.

### WHAT IS YOUR FAVORITE THING ABOUT DOING A SHOW?

- The amazing friendships you'll make – *Abby*
- Singing and acting with my friends – *Miki*
- Having fun – *Adele*
- All the friends I make – *Ruby*
- Getting to get all the attention when you are on stage – *Gia*
- I show talent and we all have a good time – *Kaliana*
- Being excited – *Nahla*
- Hanging out with your friends, having fun and wanting the audience to laugh – *Kylie*
- I love performing in front of everyone in a character other than yourself – *Sage*
- I get to do what I love – *Keva*
- Making people laugh – *Hannah*
- The performing is amazing – *Maddie*
- I love cooperating with everyone else and making people laugh – *Keaton*
- Dancing – *Grace*
- The lifelong friendships you make with your fellow cast members – *Keturah*
- Being a part of a cast – *Lulu*
- EVERYTHING! – *Gigi*

### WHAT IS THE HARDEST THING ABOUT DOING A SHOW?

- Commitment – *Grace & Hannah*
- Controlling your excitement – *Adele*
- Staying in character even if something bad happens – *Sage*
- Staying quiet and not talking – *Kylie*
- Memorizing lines – *Lulu*
- Timing – *Gigi*
- The last bows because that is the last time you are on stage with them – *Charlotte*
- Performing – *Keva*
- Paying attention; you really want to have fun – *Nahla*
- Dancing – *Maddie & Ruby*



- Blocking is always long and hard to remember – *Gia*
- When I'm waiting for the show to start, I have butterflies in my stomach – *Kaliana*
- Memorizing certain moments or words – *Miki*
- Sometimes when you are tired it's hard to give your all – *Abby*

### WHAT ADVICE DO YOU HAVE FOR OTHER KID ACTORS?

- Just have fun – *Maddie*
- Believe in yourself; don't give up and try your best; you got this – *Nahla*
- Have fun and don't forget to smile – *Sage*
- Give it all out – *Kaliana*
- Smile on stage, you have so much fun, you won't realize you're doing it – *Gigi*
- Be yourself and the more stupid you feel, the better character you have – *Charlotte*
- NEVER give up – *Grace*
- If you can't get in at first, keep trying; you can always improve – *Gia*
- Smile and have fun but pay attention – *Kylie*
- You can do it – *Keva*
- Don't stress; have fun – *Adele*
- If you want to be successful, keep auditioning! Experience is key – *Hannah*
- Believe in you – *Ruby*
- Just have fun – *Lulu*
- It's okay to be nervous; it means that you care. Having fun is 1000% more important than you'd think. Do your best and enjoy yourself – *Miki*
- Always have courage and have fun – *Keturah*



P.O. Box 703  
Hershey, PA 17033

## UPCOMING EVENTS / CALENDAR DATES

<b>The Homecoming</b>	December 5–15, 2019
<b>Theater Academy: Winter Session</b>	Saturdays, January 11–February 29, 2020
<b>Love, Loss, and What I Wore</b>	February 13–16, 20–23, 2020
<b>Theater Academy: Spring Session</b>	Saturdays, March 14–April 4, 2020
<b>The Unforgettable Big Band: The Music of Doris Day and Les Brown</b>	May 8 & 9, 2020
<b>When We Were Young and Unafraid</b>	May 14–17, 2020
<b>Theater Academy: Summer Session</b>	June 15–26, 2020
<b>Rock of Ages</b>	July 16–19, 23–26, 2020
<b>Theater Academy- Theater in the Gardens</b>	July 13–24, 2020
<b>You Can't Take it With You</b>	October 1–4, 8–11, 2020
<b>Debbie Macombre's A Gift to Remember</b>	December 3–6, 10–13, 2020

VISIT [HERSHEYAREAPLAYHOUSE.COM](http://HERSHEYAREAPLAYHOUSE.COM) FOR THE MOST UP-TO-DATE CALENDAR LISTINGS.